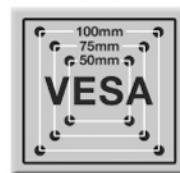


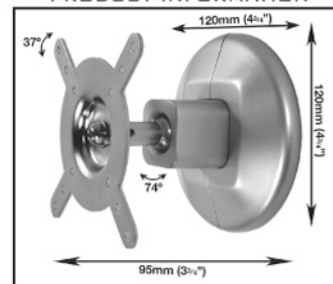
LCD SCREEN WALL MOUNT WITH TILT AND PIVOT ASSEMBLY AND INSTALLATION

THIS PACK CONTAINS 1 WALL MOUNT.

PRODUCT INFORMATION



Designed for LCD screens
with VESA® Standard
mounting patterns:
50mm x 50mm,
75mm x 75mm,
100mm x 100mm



- Max weight of LCD screen 15Kg (33lbs)
- Max size of LCD screen 23"
- +/- 37° Tilt* • 74° Pivot* (*Subject to size of screen)



Important Safety Instructions:

Do not install this product until the instructions and warnings have been read and understood thoroughly. Please keep these instructions for future reference.

Due to the weight of LCD screens and their fragile nature, B-Tech recommends that a professional installer is used when mounting this bracket. If you do not understand the instructions provided, or are not sure how to install this product, please contact a professional for advice and / or to install this mount. Failure to mount this bracket correctly may lead to serious injury and / or death. Please pay careful attention to where this mount is located. Some walls are not suitable for installation. If you install this mount on drywall it must be anchored into a wood stud, concrete block or brick behind the drywall. It is not suitable for securing to steel studs or weak concrete / brick. Installing on drywall alone will not support the weight of a LCD screen. Ensure sufficient space and safety distance is allowed when installing this product. If installing in a public area, or over the likely path of pedestrians, this product should be mounted as far as possible from the public / pedestrians.

When drilling holes it is particularly important to take care of electrical cables, water or gas pipes in the wall. It is important that all fixing screws supplied are used. If the fixing screws included are not sufficient for the wall you are mounting this product on, please consult your local hardware store.

The screen attached must weigh no more than the recommended weight of 15 Kg (33lbs). This mount must be mounted on a wall horizontally to prevent free motion due to the weight of the screen when adjusting the position. Ensure that when installing your screen on this mount, that the correct viewing distance and angles are observed, as well as avoiding any direct or reflected glare including glare from electric lighting etc. If there is any doubt, consult the instruction manual of your screen.

Proper attention should be paid when laying the connecting cables so that they do not cause a hazard. Pay careful attention to moving parts of the bracket, especially when assembling and adjusting, as fingers (or other body parts) may become trapped. The screen may have free motion due to its own weight. It is recommended that periodic inspections are made of the mount to ensure that there is no change to the fixings or mount. When cleaning the mount, use dry cloth only. B-Tech International Limited, its distributors and dealers are not liable or responsible for damage or injury caused by improper installation, improper use or failure to observe these safety instructions. In such cases any guarantee will expire.



CAUTION:

This wall mount is intended for use only with the maximum weights indicated. Use with heavier than the maximum weights indicated may result in instability causing possible injury



COPYRIGHT 2006 B-TECH INTERNATIONAL LTD
For more information on B-Tech please visit: www.b-tech-int.com

Patent Application
No: GB0610754.1

Made in China



BETTER BY DESIGN™

BT7519

LCD WALL MOUNT WITH TILT & PIVOT

ASSEMBLY & INSTALLATION
(Parts list on back page)

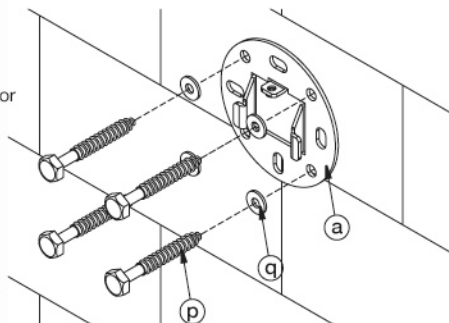
COPYRIGHT 2006
B-TECH INTERNATIONAL LTD

1

Choose a suitable location for wall mount (**part a**).
Use all 4 M8 coach screws, (**part p**) washers (**part q**) and wall plugs (**part r**) provided and distribute as evenly as possible to spread the load.

Use a 10mm (2/5") drill bit to make holes for wall plugs

This wall mount has been designed with mounting holes large enough to be drilled through, allowing one wall screw to be mounted before the other 3 holes being drilled.
(If unsure about mounting this product, please consult a professional installer).

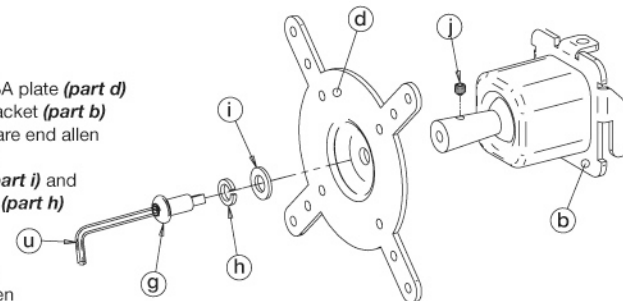


2

Assemble VESA plate (**part d**) to ball joint bracket (**part b**)
Using the square end allen screw (**part g**) with washer (**part i**) and spring washer (**part h**)

Once securely attached, fasten grub screw (**part j**) into ball joint arm (**part b**).

(This will stop VESA plate from unnecessarily rotating once mount is installed).



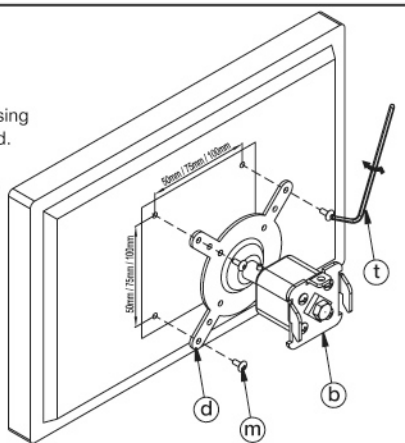
3

Attach VESA plate to rear of LCD screen using the 4 M4 x 10mm (**part m**) screws provided.
(If unsure of screen's mounting patterns, please consult the screen's owner manual).

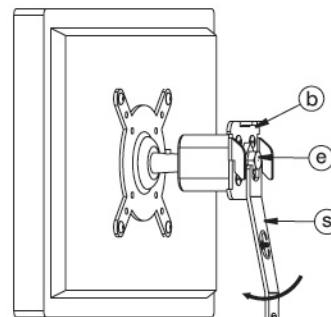
CAUTION: Do not overtighten screws

An extra M4 x 15mm screw and washer (**part n & o**) are provided to use with an additional security cable (not supplied).

VESA® - Flat Display Mounting Interface (FDMI™) is the industry standard that also includes specifications of the quality of the material used. The majority of manufacturer's of LCD and TFT screens include the VESA® mounting hole pattern on the back panel of their monitors. The BT7519 adaptor plate is designed for VESA® MIS-D mounting fixings of 100mm x 100mm, 75mm x 75mm or 50mm x 50mm



4

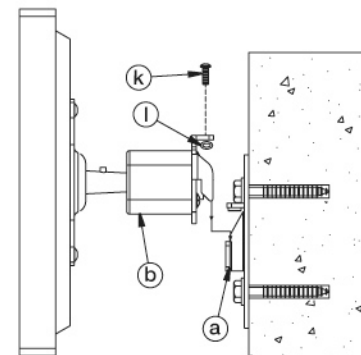


Using spanner (**part s**) adjust the M8 bolt (**part e**) on rear of ball joint arm to the required tension.
The stiffness of arm should be able to hold the weight of the screen without any free motion yet be able to rotate the screen when minimum force is applied.

5

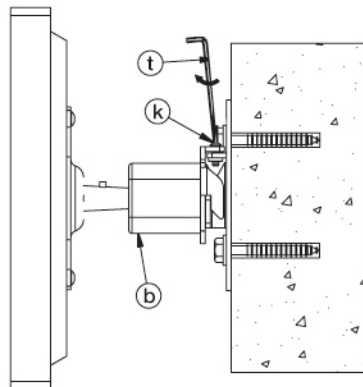
Insert M4 allen screw (**part k**) into the top of top of ball joint bracket (**part b**). The rubber ring (**part l**) should be placed underneath the hole to hold locking screw in place before being fastened.
(This part may come pre-assembled).

Hook screen onto wall bracket (**part a**).
(This procedure may require 2 persons).



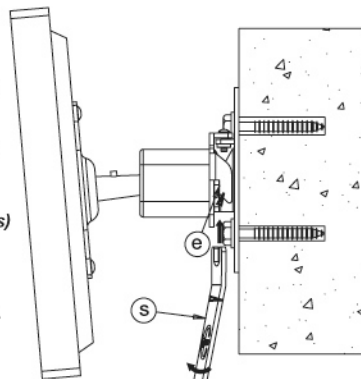
6

Once screen is secured to wall mount (**part a**). Fasten locking screw (**part k**) with long ball-end allen key (**part t**).
(This prevents easy removal of screen).



7

The Aviball arm allows the screen to move freely 37° in any direction. Once screen is adjusted to preferred angle, use the spanner (**part s**) to make a small adjustment of the M8 bolt (**part e**) to lock screen in position.



8

To complete installation attach the two halves of the coverplates (**part c**) over the wall mount (**part a**).

